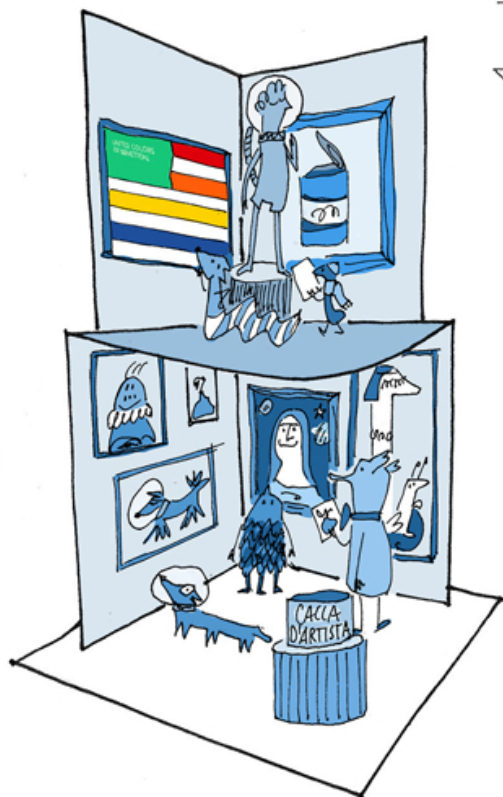


IL MUSEO



TAGLIA
PIEGA
INCOLLA

QUADRO
COLORISTA



(D)
(E)
(F)



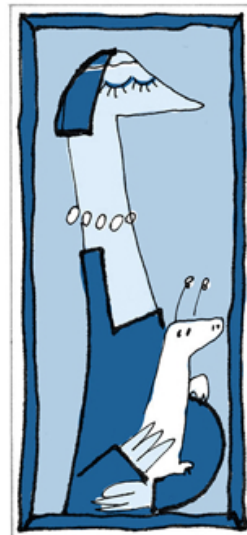
MONNA
BLU

(C)

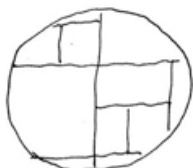


LUIGI LXXV

(G)



LA
DAMA
CON
L'ALIENINO



PAG.1

OPERA D'ARTE
CHE E' MEGLIO
NON APPRIRE.



MI RACCOMANDO,
ATTACCA
I QUADRI
DRITTI!



DI COLOROPOLI

NEL MUSEO DI COLOROPOLI TROVATE LE OPERE PIU' IMPORTANTI DEL PIANETA.
UN TEMPO TUTTI I QUADRI ERANO **ROSSI** PERCHE' NESSUNO AVEVA MAI PENSATO
DI USARE ALTRI COLORI.

MA UN GIORNO UN PITTORE DISEGNO' UN CESTINO DI MIRTILLI DAVANTI AL MARE BLU.
PIACQUE COSI' TANTO CHE DA QUEL MOMENTO FECERO SOLO QUADRI **BLU**.

UN PROGETTO DI

**UNITED COLORS
OF BENETTON.**

IN COLLABORAZIONE CON

MUBA
MUSEO DEI BAMBINI MILANO

A CURA DI
ISADORA BUCCIARELLI



CANE VELOCISSIMO
DI FUTUROPOLI

(E)

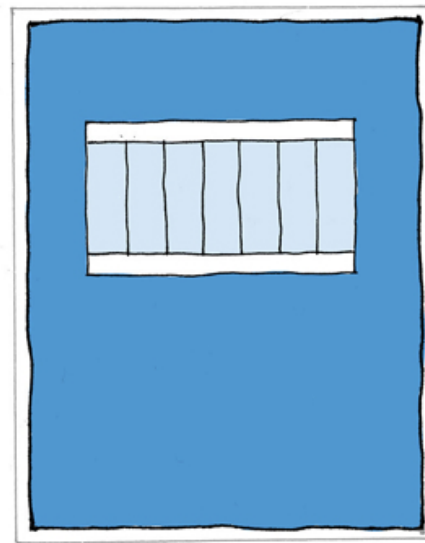
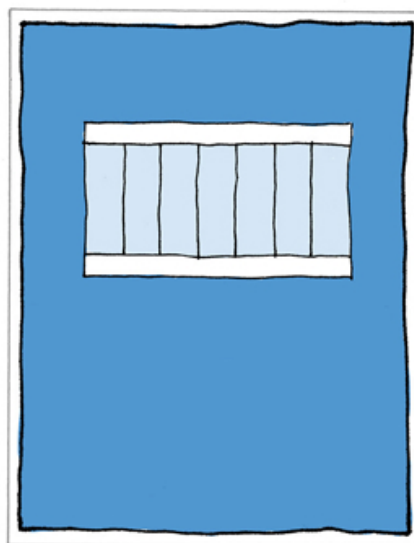
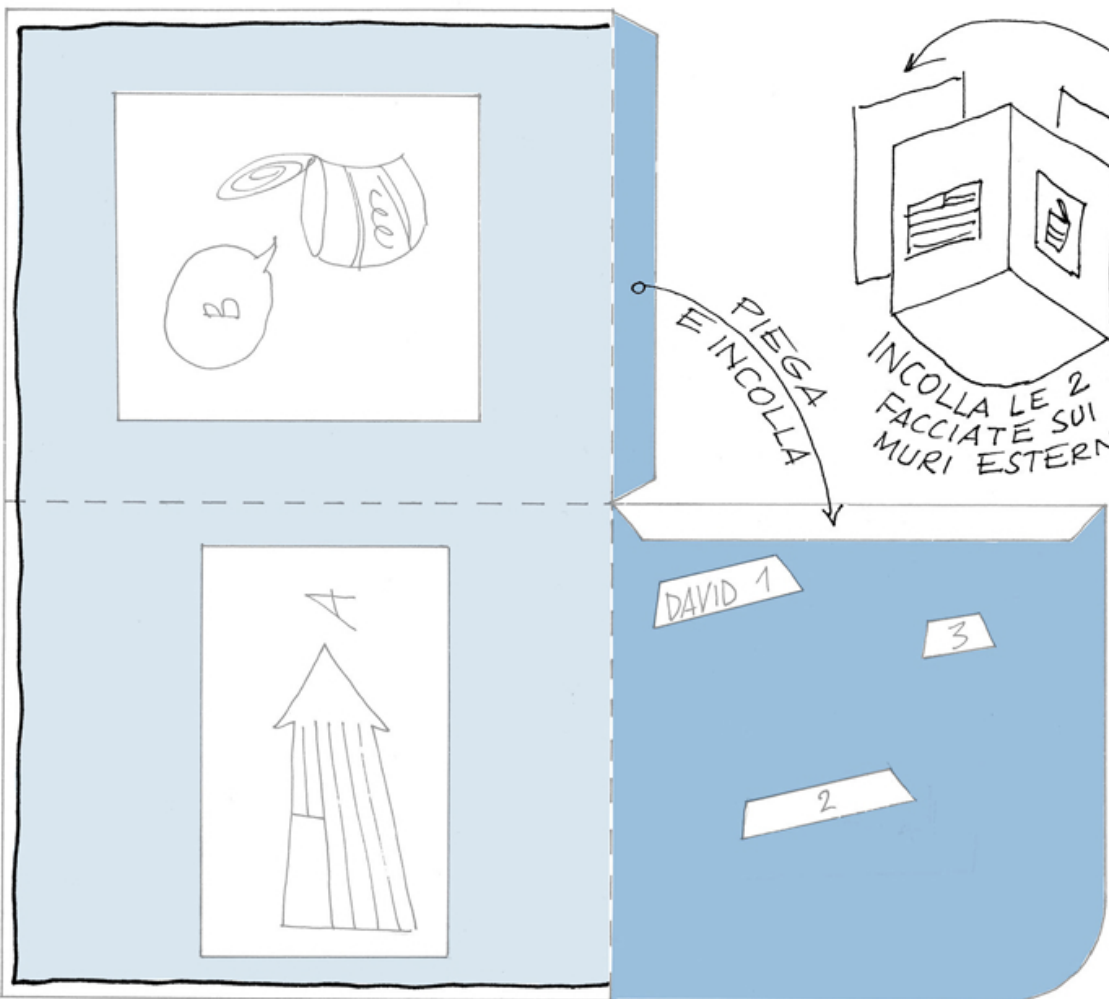
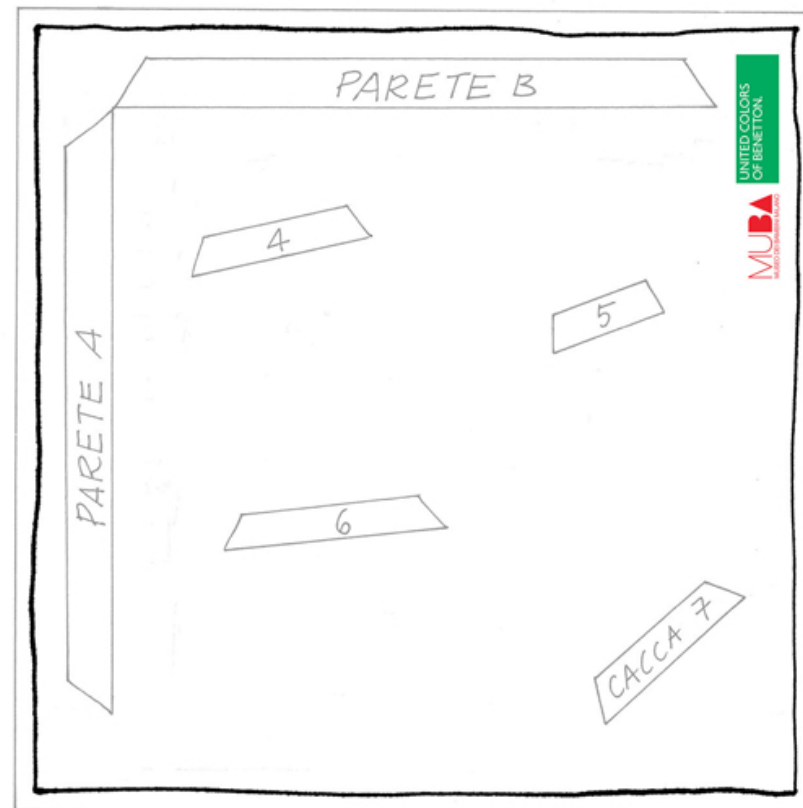


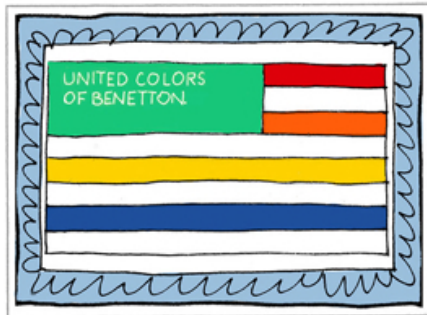
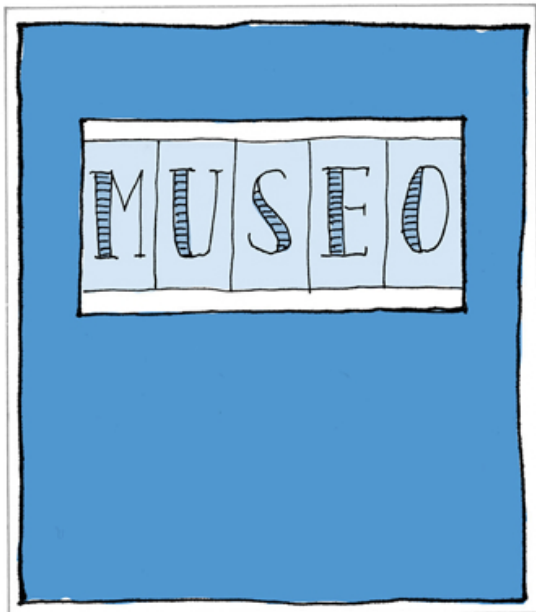
(B)



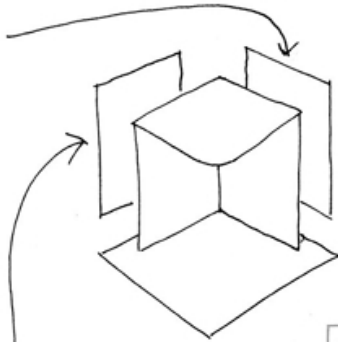
SUGO D'ARTISTA

PAG.2

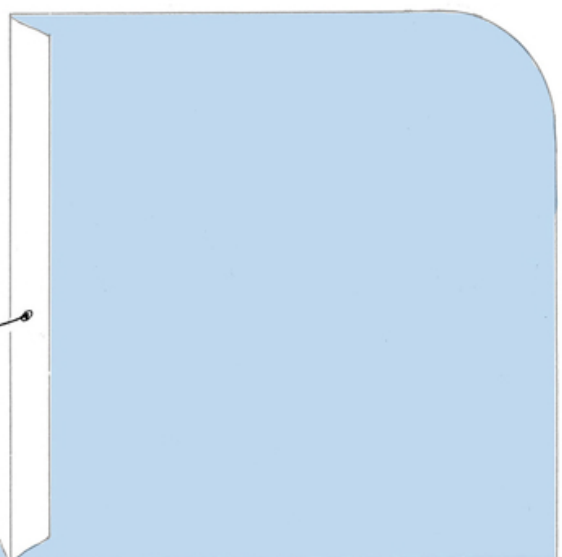




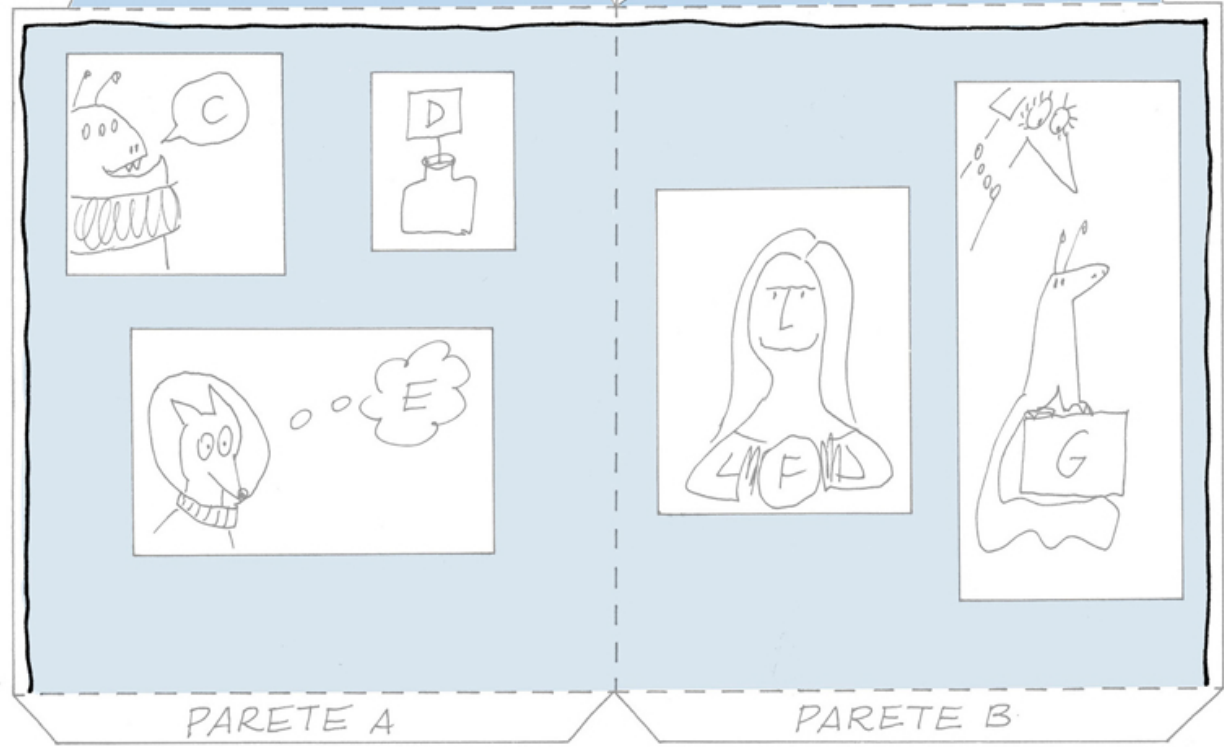
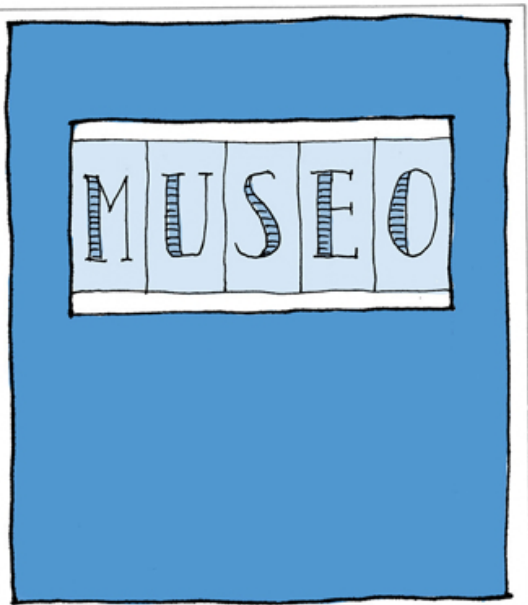
(A)
INCOLLA
LE 2 FACCIATE
ESTERNE
DIETRO A
QUESTE
PARETI



PIEGA
E INCOLLA



QUESTE SONO
2 FACCIATE
ESTERNE



PARETE A

PARETE B